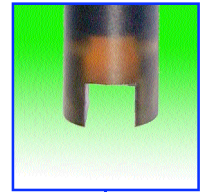




Model C7685 Microprocessor Conductivity Meter

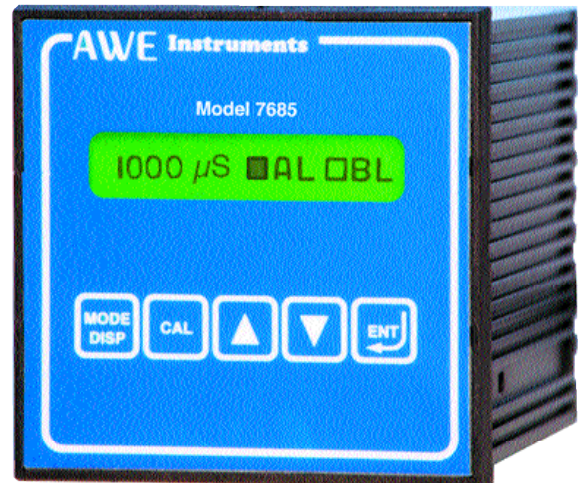


- ★ Displays μS , mS or % Conc
- ★ Auto Ranging
- ★ Two Control Relays.
- ★ One Alarm Relay.
- ★ Isolated Current Output.
- ★ Panel Mounting 96 Din.
- ★ Alphanumeric Display.
- ★ User Friendly μP .
- ★ IP65 Front Panel.

The model C7685 is a μP panel mounting Conductivity meter which will display Conductivity in μS , mS , or solution strength in %, Gr/L or Be' for high ranges above 20.00 mS the optional micro transmitter pre amplifier is required which can be specified for use with electrodeless cells for measurements upto 2000 mS .

The C7685 Conductivity meter features cell constant(k) selection from $k = 0.1$ to $k = 10$ auto temperature compensation with adjustable base reference temperature from 10 to 99°C and adjustable temperature coefficient from 0 - 5% / °C.

The model C7685 is the Conductivity version of a range of user friendly microprocessor based electrochemical instruments. Designed to provide reliable accurate and



dependable measurement and control of many industrial process featuring.

Two programmable control relays are fitted, the control relays can be programmed for either high or low operation and have adjustable hysteresis and delay timers. One adjustable alarm relay with delay timer is fitted which maybe set to operate on both a high and low measured value.

The isolated output corresponds to the measuring range selected and can be programmed for either 0 - 20 mA or 4 - 20 mA .

The 16 character alphanumeric LCD displays the measured parameter, temperature and provides information about the state of the control and alarm relays. Also accessible is an indication of the operating condition of the sensor, state of calibration, control points, alarm setting and analogue outputs.

The versatility of the microprocessor accompanied by the user friendly software allow the programming of the functions, routine checks and calibration to easily be accomplished even by untrained operators.

Installation of the 7685 series of instruments is intended to be into a control panel or in the optional IP65 weatherproof enclosure for all year round outside installation. The electronics are housed into an anodised aluminium case providing excellent EMC properties.

The rear of the case is fitted with two plug in connector blocks for ease of installation and maintenance.

Ranges For C7685 Conductivity Meter

Input From Two Electrode Cells							
k	0.1	0.2	0.5	1.0	2.0	5.0	10
Range 0 -	2.000 μS	4.000 μS	10.00 μS	20.00 μS	40.00 μS	100.0 μS	200 μS
	20.00 μS	40.00 μS	100.0 μS	200.0 μS	400.0 μS	1000 μS	2000 μS
	200.0 μS	400.0 μS	1000 μS	2000 μS	4000 μS	10.00 mS	20.00 mS
	2000 μS	4000 μS	10.00 mS	20.00 mS	40.00 mS	100.0 mS	200.0 mS
Input From Micro Transmitter & 4 Electrode Cell or Input From Micro Transmitter & Electrodeless Cell							
k	0.5		1.0		2.0		
Range 0 -	10.00 mS		20.00 mS		40.00 mS		
	100.0 mS		200.0 mS		400.0 mS		
	1000 mS		2000 mS		4000 mS		

Specifications

Input

Ranges

Temp range

Temp comp/display.

Display

Output

Set points

Hysteresis

Alarm

Time delay

Zero

Slope

Mains supply

Power consumption

Weight

Dimensions

C7685

AWE Conductivity cell k= 0.1 to 10 see table
MT preamp 080315 Electrodeless

0 - 20.00 μ S to 0 - 20 mS (k = 1.0) see table

-10 to 110 °C

Automatic via Pt100 sensor
Base from 10 - 99°C.
Coefficient 0 - 5% /°C

16 character alphanumeric LCD.

0 - 20mA / 4 - 20 mA programmable
into 600 Ω

2 on/off high/low selectable.
5 amp non inductive.

$\pm 10\%$ adjustable.

1 min./max. or
0 - 60 mins activation of S1/2

0 - 25 seconds adjustable.

adjustable.

adjustable.

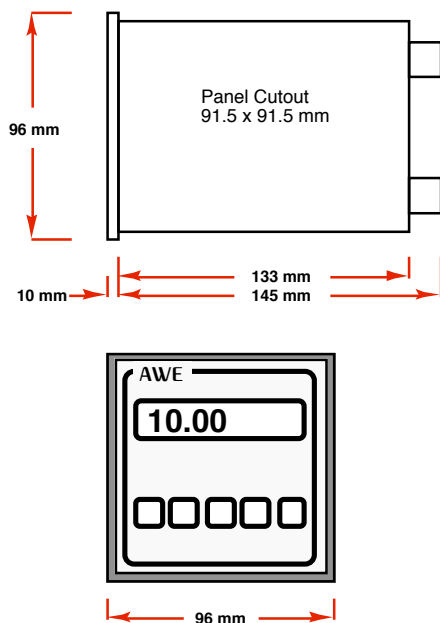
230/115 volt 50/ 60 Hz.

5 VA

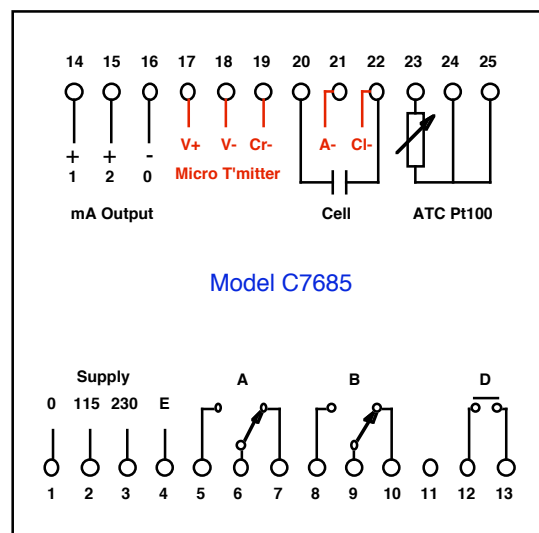
850 grams DIN rail version

96 x 96 x 155 mm. cutout 91.5 x 91.5 mm.

Dimensions



Connections



AWE

Automated Water & Effluent Ltd

AWE House Antom Court, Tollgate Drive, Beaconside, Stafford, ST16 3AF UK.

Tel: 01785 254597 Fax: 01785 257724

www.awe-ltd.co.uk email sales@awe-ltd.co.uk